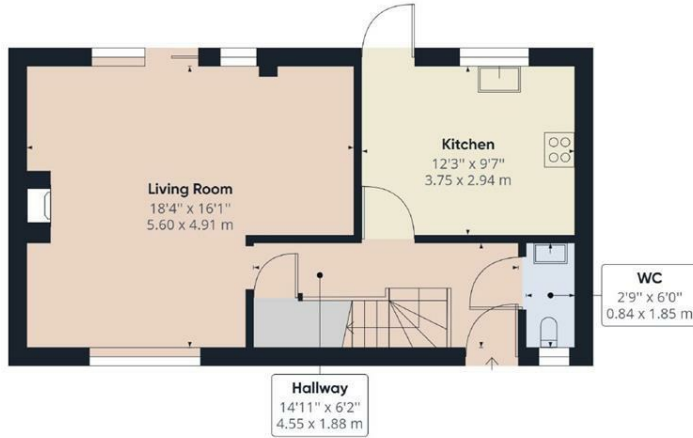


9 Huntersfield Close, Lordswood, Chatham, Kent, ME5 8XZ

draft details GUIDE PRICE £375,000- £400,000 *FANTASTIC PLOT**NO CHAIN** GARAGE**DRIVE**ROOM TO EXTEND**DETACHED* This fantastic opportunity has just arisen to purchase this great detached house with no chain. The property is ideal if you want to put your own stamp on it and offers bags of potential. This 4 bedroom house is situated on a good size plot with front and rear gardens, a garage and ample parking. Internal accommodation comprises entrance hall, cloakroom, kitchen and lounge. To the first floor there are 4 bedrooms and a family bathroom. The property is central heated and double-glazed and has the added benefit of no chain. Lordswood is a sought after location offering many amenities and is within a short driving distance to the M20 and M2. Call now to book your viewing

- 4 BEDROOM
- DETACHED HOUSE
- POTENTIAL TO EXTEND
- CLOAK-ROOM
- REAR GARDEN
- CHAIN FREE
- GARAGE
- NO CHAIN
- BLOCK PAVED DRIVE

£375,000



Ground Floor Building 1

Approximate total area⁽¹⁾
 939.08 ft²
 87.24 m²



Floor 1 Building 1

(1) Excluding balconies and terraces

While every attempt has been made to ensure accuracy, all measurements are approximate, not to scale. This floor plan is for illustrative purposes only.

GIRAFFE360

